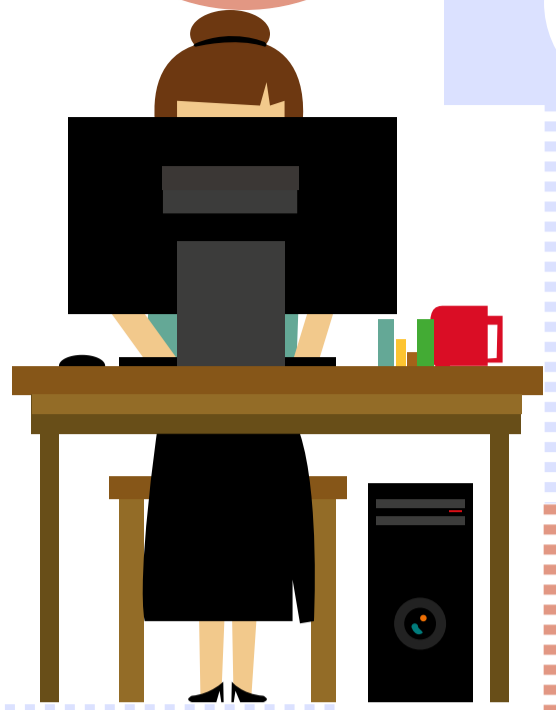


Setting Up A Work From Home Space



After the pandemic, work from home has become a common scenario. To maintain efficiency during work from home, it is important to set up dedicated work space.

01

Choose a secluded space with ample natural light.

02

Invest in a desk that suits your requirements & is comfortable to work on.

03

Buy an office chair with ergonomic design, adjustable height, & comfortable seat.

04

Analyze the level of storage you need and choose from different types of storage cabinets such as open cabinet, chest of drawers, etc.

05

Light up the area! You can use a variety of lights such as wall lights, ceiling light, floor lamp, and table lamps.

06

Decorate the area for creating a positive environment using accessories such as wall art, storage baskets, picture frames, etc.

www.killeenfurniture.com

Ashley HomeStore

1101 South W S Young Drive,
Killeen, TX 76543

Phone: (254) 634 - 5900

